

DIBAL

SCANNER / SCALE Weighing Kit **KM-2000**

Integration with
Metrologic Stratos[®]
Bi-optic Scanner



© Third parties brand names, registered by their owners, are mentioned for informative purposes only.

Description



The **KM-2000 weighing kit** can be integrated with the **Metrologic Stratos MS-2221* bi-optic scanner**, to produce a compact scanner / scale equipment. It can be connected to the POS or ECR and send the information required to be shown in the receipt from those items weighed on the plate or read by the scanner.

Product identification is made by selecting it in the POS or ECR or, depending on your POS/ECR application, automatically from the bar code read by the scanner.

Weighing components are placed in an isolated emplacement, allowing to undergo the **maintenance works of the scanner with no need to unseal the equipment**.

*Integration with other scanner models: upon request.

Capacity / Accuracy

6 kg - 2 g, 15 kg - 5 g or 30 kg - 10 g.
Optional multirange: **6/15 kg, 15/30 kg.**

Communications

RS-232 interface.
Data transmission is done through **communication protocols**, available for the most important POS / ECR models and manufacturers.

Memory

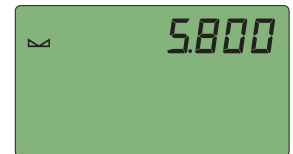
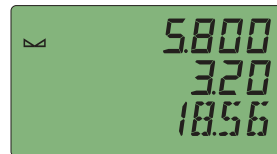
"Flash" type memory: allows the **update of the scale software from a computer**.

Display

KM-2000 weighing kit includes a **backlight LCD display**, separated from the weighing plate.

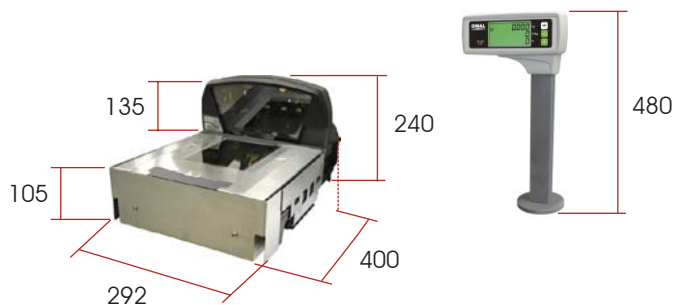
The column has a circular base to allow the display orientation and facilitate its reading.

The display can show **weight** (up to 5 digits), **price** (data coming from the POS or ECR, up to 5 digits) **and amount** (up to 6 digits), or **just the product weight**. These two options can be selected by the user.



KM-2000 kit is available in two versions: with **one display** or with **double display (vendor and purchaser)**.

Dimensions



EC Approval

EC type approval certificate: **T6805**.

