



Economical.
Easy to Use.
Durable.

Hand Labelling Solutions

For Your Everyday Labelling Needs

Hand Labelling Solutions

With over 50 years experience in the production of hand labelling devices, SATO continues to manufacture the most robust, reliable and user friendly devices with complementary labels for all applications.



KEY APPLICATIONS:

Designed for merchandise labelling in both small and large volumes, SATO devices can print one or two lines of information and are available in a number of models tailored to the needs of the application.

Food Industry

Conduct effective stock rotation and minimise product waste



Manufacturing Industry

Overall operational efficiency is maximised and costs kept low



Retail

To avoid customer confusion, pricing labels need to be clear

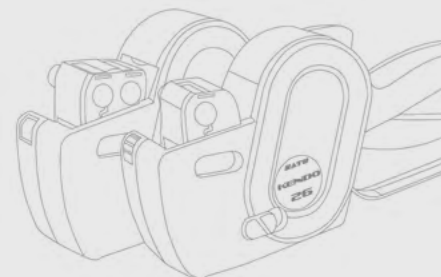


Supermarket

Required to meet stringent guidelines on food safety



Our In-House Studio team can design pre-printed labels which are customised to promote your business. Our Telesales team will be pleased to discuss your requirements.



1 One-Line Hand Labellers

KENDO



KENDO, SATO's innovative concept of Hand Labellers, provide one line of print on two label sizes, with large open character view.



✓ KEY FEATURES

- Large 5mm height font
- Clean, Easy-ink loading
 - Easy label loading
- Customisable print layouts

The Kendo & Judo feature larger font sizes and wide-open bays for label loading, making these models extremely user friendly.

APPLICATION EXAMPLES



2 Two-Line Hand Labellers

JUDO



Judo, SATO's innovative range of Hand Labellers, provides two lines of print and is great for promotions.



✓ KEY FEATURES

- Choose from a wider variety of label types and sizes
 - Easy to load/unload ink roller
- Uniquely designed platen mechanism
 - Wide open path for label loading
 - Customisable print layouts

APPLICATION EXAMPLES

25/10/2007
€654.00

13.04.09
EXPIRY DATE
13.06.09

03-12-06
EXPIRATION
25-12-06

SAVE €85.99
SPECIAL OFFER
NOW €70.00

0150123456
0252224445

General Specifications

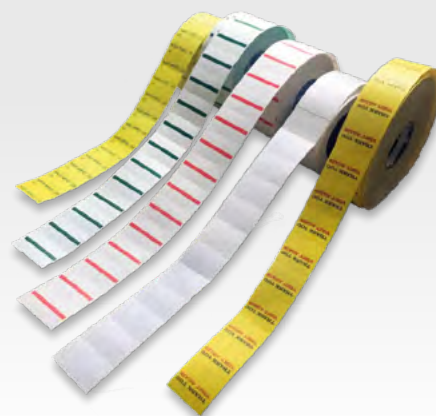
MODEL	KENDO 22	KENDO 26
Bands Per Head	6,8,10	6,8,10
Font Height	4.5 ~ 5.0mm / 0.18" ~ 0.20"	4.5 ~ 5.0mm / 0.18" ~ 0.20"
Label Size	W 22mm x P 12mm / W 0.90" x P 0.50	W 26mm x P 12mm / W 1.02" x P 0.50
Label Shape Supported	Wavy, Rectangular	Wavy, Rectangular
No. of Labels Per Roll	1,500 labels per roll	1,500 labels per roll
Labeller Size	W 50mm x D 245mm x H 123.5mm W 2.0" x D 9.7" x H 4.9"	W 50mm x D 245mm x H 123.5mm W 2.0" x D 9.7" x H 4.9"
Labeller Weight	280g	280g
Label Types	Plain or Pre-printed, Multi colours and Shapes	Plain or Pre-printed, Multi colours and Shapes
Label Adhesives	Perm, Peel, Freeze, Wash off, Outdoor	Perm, Peel, Freeze, Wash off, Outdoor
Label Design	SATO UK's in house studio design	SATO UK's in house studio design

MODEL	JUDO 22	JUDO 26
Bands Per Head	6,8	6,8,10
Font Height	3.0 ~ 4.5mm / 0.12" ~ 0.8"	3.0 ~ 4.5mm / 0.12" ~ 0.8"
Label Size	W 22mm x P 16mm / W 0.90" x P 0.63"	W 26mm x P 16mm / W 1.02" x P 0.63"
Label Shape Supported	Wavy, Rectangular	Wavy, Rectangular
No. of Labels Per Roll	1,200 labels per roll	1,200 labels per roll
Labeller Size	W 50mm x D 245mm x H 123.5mm W 2.0" x D 9.7" x H 4.9"	W 50mm x D 245mm x H 123.5mm W 2.0" x D 9.7" x H 4.9"
Labeller Weight	300g	300g
Label Types	Plain or Pre-printed, Multi colours and Shapes	Plain or Pre-printed, Multi colours and Shapes
Label Adhesives	Perm, Peel, Freeze, Wash off, Outdoor	Perm, Peel, Freeze, Wash off, Outdoor
Label Design	SATO UK's in house studio design	SATO UK's in house studio design

Labels to suit various applications

Produced using various top quality materials, SATO offers hand labeller labels that suit different labelling requirements for e.g. water-resistant labels for food rotation labelling.

Available in different shapes, sizes, colours and customised pre-print options, our labels work seamlessly with our 1, 2 and 3-line hand labellers to provide users optimal print quality and performance.



Special types available:



**Water
Resistant**



**Freezer
Safe**



**Smudge
Resistant**



**Easy
Peel-off**

For more information, contact your local SATO office today!

satoeurope.com

All information in this leaflet is accurate as of 2020 June.
Product specifications are subject to change without notice.
Any unauthorized reproduction of the contents of this leaflet,
in part or whole, is strictly prohibited.
All other software, product or company names are trademarks
or registered trademarks of their respective owners.



© 2020 SATO CORPORATION. All rights reserved.
For more information, please contact your local
SATO office, or visit: satoeurope.com