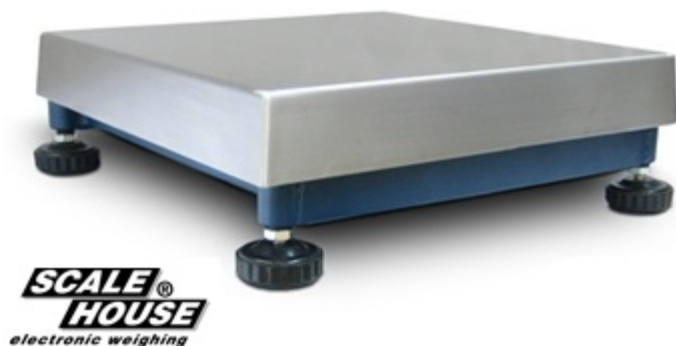


PB platforms

"PB" SERIES SINGLE CELL PLATFORMS



Small and medium capacity electronic platforms with a stainless steel surface having a precise and sturdy structure. Suitable for creating scales and automatic weight checking systems for all industrial and commercial applications. The standard version is provided with approved load cell.

The best solution
for advanced industrial
applications

TECHNICAL FEATURES

- Functioning with a "single point" 350 Ohm aluminium load cell, approved according to OIML R60 C3 standards (3000 divisions), IP65 protection degree.
- Steel tubular structure, oven-fire painted blue, with adjustable resting feet and level.
- Fitted with stainless steel loading surface.
- Up to 15 Vdc power supply.
- Shielded cable for connection to the indicator.
- Upon request:
 - 3000e CE-M approval;
 - support column for indicator.

VERSIONS

Weighing platform: Available versions

Code	l x w x h (mm)	Max (kg)	d (g)	CE-M* 3000e (g)
PBT6	300x300x130	6	2	2
PBT15	300x300x130	15	5	5
PBT30	300x300x130	30	10	10
PBQ30	400x400x140	30	10	10
PBQ60	400x400x140	60	20	20
PBQ150	400x400x140	150	50	50
PBX60	600x600x150	60	20	20
PBX150	600x600x150	150	50	50
PBX300	600x600x150	300	100	100
PBE300	800x800x165	300	100	100
PBE600	800x800x165	600	200	200

(*) CE-M divisions are obtainable only with the relative options.



www.diniargeo.com

“YOUR WORLDWIDE PARTNER FOR WEIGHING,”

DINI AR GEO
FRANCE sarl
Nogent-sur-Marne
info.fr@diniargeo.com

DINI AR GEO
GMBH
Sinsheim - Germany
info.de@diniargeo.com

DINI AR GEO
UK Ltd
Taunton - United Kingdom
info.uk@diniargeo.com

DINI AR GEO WEIGHING
INSTRUMENTS Ltd
Shanghai - China
info.cn@diniargeo.com

DINI AR GEO
WEIGHBRIDGES
Calto (RO) - Italy
info@diniargeo.com



HEAD OFFICE

Via Della Fisica, 20
41042 Spezzano di Fiorano Modena - Italy
Tel. +39.0536 843418 Fax. +39.0536 843521
info@diniargeo.com

SERVICE ASSISTANCE

Via Dell'Elettronica, 15
41042 Spezzano di Fiorano Modena - Italy
Tel. +39.0536 921784 Fax. +39.0536 926654
service@diniargeo.com



SALES AND TECHNICAL ASSISTANCE SERVICE