

# DIBAL

# 500 RANGE SCALES



# WIND SERIES

WIND SERIES scales belong to **500 RANGE**, the new family of DIBAL scales, outstanding for design, technology and performance.



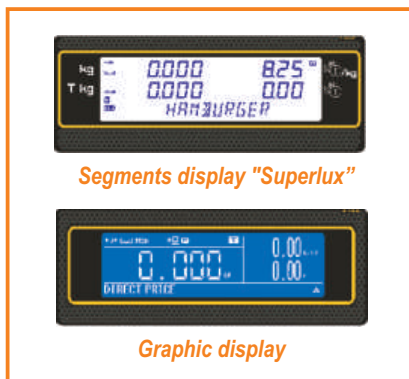
WIND MISTRAL TORNADO STAR

**Capacities**

- Mono-range (3.000 divisions):**  
15 kg - 5g  
30 kg - 10g
- Multi-range (3.000 divisions):**  
6 kg - 2g # 15 kg - 5g  
15 kg - 5g # 30 kg - 10g
- Mono-range (6.000 divisions):**  
12 kg - 2g  
30 kg - 5g

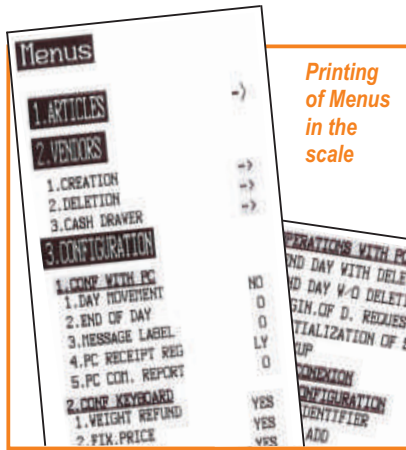
**Display**

- Segments display or graphic display.
- Both of them can show weight, price, total and tare, active vendors and name of the product.
- Additionally, graphic display can show logos, publicity, profitability codes (in vendor side) and allow to choose between 4 "screen designs".

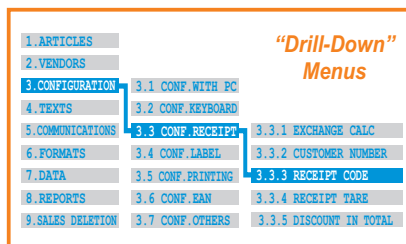


Segments display "Superlux"

Graphic display



Printing of Menus in the scale



"Drill-Down" Menu

**Amazing functionality**

- Depending on model, WIND SERIES scales are supplied with up to 5.000 PLUS, up to 45 preset keys and up to 10 vendors (see table of models).
- Complete information for each PLU:**
  - Regular price.
  - Price by weight segments and per kg/100 g (W-020 and W-025).
  - 2 names of 20 characters (1 name in W-010 and W-015).
  - 10 free texts of 24 characters (5 texts in W-010 and W-015).
  - 1 text of 1.024 characters (W-025).
  - Profitability code.
- Sales and management reports:** sales (by article, vendor, time slots, last month,...), margins, cash drawer report, last modified PLUs,...
- Fast and reliable communications** among scales, PC and mobile devices including new DWS (Dibal Web Server).

**Easy programming and operation**

- WIND SERIES scales have been designed thinking on the needs of users and service departments:
  - "Drill-Down" Menus.
  - Menus can be printed in the scale.
  - Special keys for direct access to programming menus: change a price, include a new PLU or vendor, sales reports,...
  - Direct access to 999 PLUs from keyboard.
  - Search of PLUs by number (W-020 and W-025).
  - Search of PLUs by name (W-020 and W-025): typing the initial characters of the name, the display shows the matching items.
  - 2 programmable "Macros" (W-020 and W-025): recording of a sequence of keys, to create a "shortcut" to any task: change of batch number, access to programming parameters, receipt reopening, reports, etc.
  - Security: configurable password system.



Direct access to 999 PLUs



Direct keys to programming menus

**Stocks management in the scale**

- Entry of initial stock.
- Register of sales, deducted from stock.
- Display and print reports of stock by PLU.
- Adjustment of stock after physical inventory.
- Information can be sent to PC.

**Table of Models**

MODEL	FORMAT		DISPLAY		TOTAL PLUs	PLUs			PRINTER		INTER-CONNECTION (ETHERNET) Nº SCALES	COMMUNICATIONS				BATTERY	
	FLAT (F)	POLE (P)	SEGMENTS LCD	GRAPHIC L LCD		DIRECT PLUs	MACROS	VENDORS	PAPER TYPE	SPEED maximum (mm/second)		ETHERNET TCP/IP	WI-FI IEEE 802.11	HOMEPLUG	SCANNER	CASH DRAWER	HIGH CAPACITY + EXTERNAL BAT. CONN.
W-010	•	•	•		2.000	45x2 + 4x2*	-	5	Receipt	80	5	•	OPT.	OPT.	•		OPT.
W-010 B	•	•	•		2.000	45x2 + 4x2*	-	5	Receipt	60	5	•	OPT.		•	•	
W-015	•	•	•		2.000	45x2 + 4x2*	-	5	Label or Receipt	80	5	•	OPT.	OPT.	•		OPT.
W-020	•	•	•	OPT.	5.000	40x2 + 9x2*	2	10	Receipt	100	10	•	OPT.	OPT.	•	•	OPT.
W-020 B	•	•	•	OPT.	5.000	40x2 + 9x2*	2	10	Receipt	60	10	•	OPT.		•	•	
W-025	•	•	•	OPT.	5.000	40x2 + 9x2*	2	10	Label or Receipt	100	10	•	OPT.	OPT.	•	•	OPT.

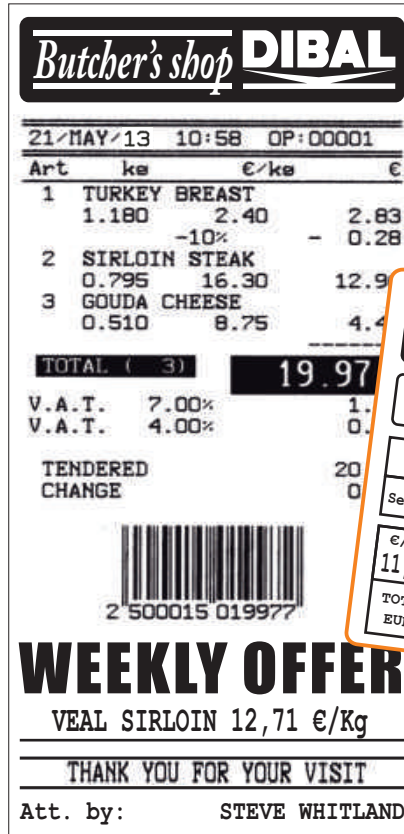
OPT. = Optional.

\* Using Shift and Vendor keys.



## Printing

- High resolution (2", 54 mm) and fast printer: up to 100 mm/second (80 mm/s in W-010/W-015 and 60 mm/s in "B" models with internal battery).
- Receipts:
  - Up to 40 lines.
  - 2 fixed formats + 1 programmable (W-020/W-025). (only 2 fixed formats in W-010 and W-015 models)
  - 4 logos per receipt (W-020 and W-025).
  - Vendor's name (W-020 and W-025).
  - 9 payment modes.
  - Total in €, old national currency and 2 additional currencies.
  - Discounts on line and total.
  - Clients on account (W-020 and W-025).
- Labels:
  - 20 fixed formats + 10 programmable (W-025). (20 fixed + 5 programmable in W-015)
  - From 30x30 up to 60x100 mm (W-025). (up to 60x80 mm in W-015)
  - 40 logos.
  - 40 fields of information.
  - 100 programmable texts.
  - Manual and automatic pre-packing modes.
  - 3 levels of totals (W-025).
  - Printing of a preset number of copies (W-025).
  - Printing with 90°-180°-270° rotation (W-025).
  - "Opto" automatic adjustment for paper detection.
  - Global expiration date (W-025).
  - Alphanumerical batch (W-025).



## Easy maintenance

- Local/remote, with/without assistance.
- Internal firmware updateable from PC.
- On line checking and modification of technical parameters, by means of optional DWS (Dibal Web Server).

## Power supply - Rech. Batteries

- Mains: 110 or 230 VDC.
- "Anti black-out" battery, optional depending on models.
- "B" models, with long lasting internal rechargeable battery: up to 36 hours. (calculated for 1.000 receipts, 3 articles per receipt).\*
- Optional external battery connector.

\* With segments display and backlight off. Load and range of rechargeable batteries can vary substantially depending on temperature, age and general state of batteries, printing frequency, networking, etc.

## Generic traceability (labels)

- Including EU Bovine Meat Regulations.
- 2 types of generic traceability (for meat, fish, fruits, vegetables,...) and up to 20 products in W-025 (1 type and up to 10 products in W-015).

## Fiscal mode (dep. on countries)

- With this option activated, the scale will keep a full copy of all receipts printed, allows printing a list of them and keeps consecutive numbers of receipts throughout the fiscal period.

## Barcodes

- WIND SERIES scales can print in both receipts and labels EAN-13 and GS1 DataBar barcodes.
- Moreover, W-020 and W-025 models also allow the connection of a scanner, powered by the scale (5 VDC), to read these barcodes.



## Formats and Dimensions

□ Flat,  
with receipt printer or label/receipt printer.

Plate: 360 x 265  
160  
365 440

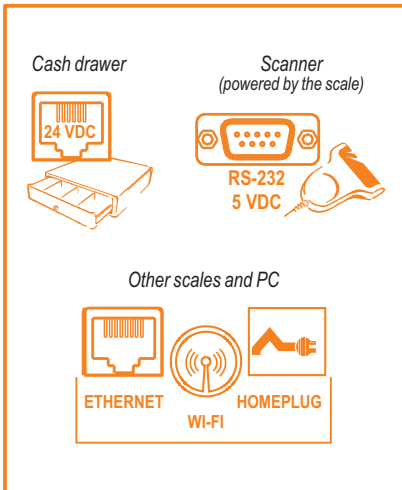
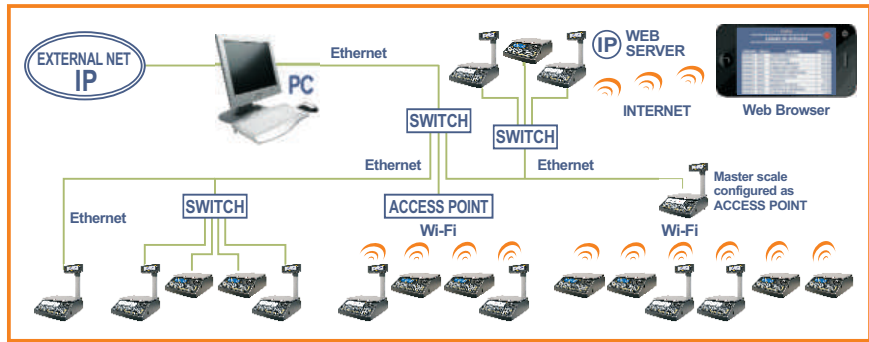
□ Pole,  
with receipt printer or label/receipt printer.

Plate: 360 x 265  
530  
365 440

Dimensions in mm.

**Communications**

- **Interconnection and computer connection** of scales based on **ETHERNET TCP/IP**, as standard, and **Wi-Fi (802.11)** or **Homeplug**, as an option.
- **Interconnection** of up to **10 scales** per section (5 in W-010 and W-015 models), on "master + slaves" or "master + submaster + slaves" configuration.



**PC Software**

- Several **applications** are available, running on **Windows**, to connect **WIND SERIES** scales to PC:

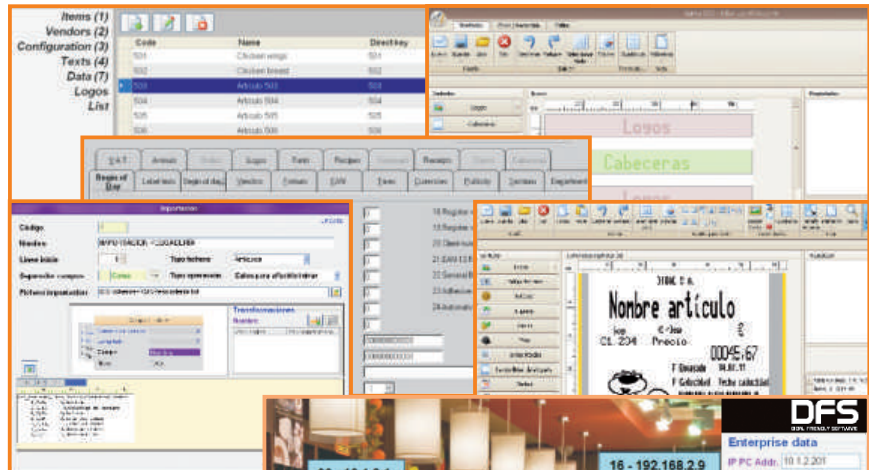
**RMS: Retail Management Software**  
**DLD: Dibal Label Designer**

- **RMS+DLD:** programming the scales, design labels/receipts (DLD) and **commercial management** of data received from scales (lists, invoices, warehouses, customers, offers, etc).

**DFS: Dibal Friendly Software**  
**DLD: Dibal Label Designer**

- **DFS+DLD:** programming the scales, design labels/receipts (DLD) and reception of data with fully configurable lists. It stands out for its **ease of use, speed of communication and simultaneous connection with all scales.**

- Moreover, Dibal supplies **integration tools** running on Windows or Linux, to facilitate the integration with **customer's "Back-Office"**.

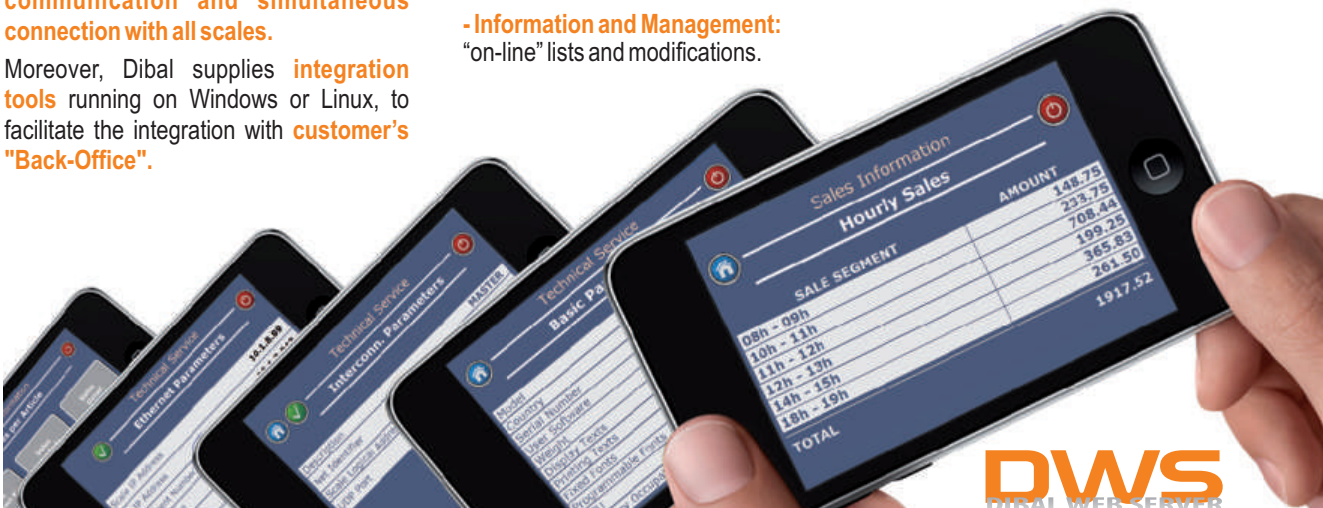


**RMS**  
**DLD**  
**DFS**



**Web Server**

- **WIND SERIES** scales can incorporate **DIBAL WEB SERVER (DWS) embedded**, allowing access to each scale -through the IP address- from any computer or mobile device (smartphone, tablet,...) with web browser. Access is protected by several levels of passwords.
- Thanks to **DWS**, **many parameters** of the scale can be remotely **checked and/or modified**:
  - **Technical Service:** consult and modification of technical parameters.
  - **Sales Information:** consult of total and detailed sales.
  - **Information and Management:** "on-line" lists and modifications.



**DWS**  
 DIBAL WEB SERVER